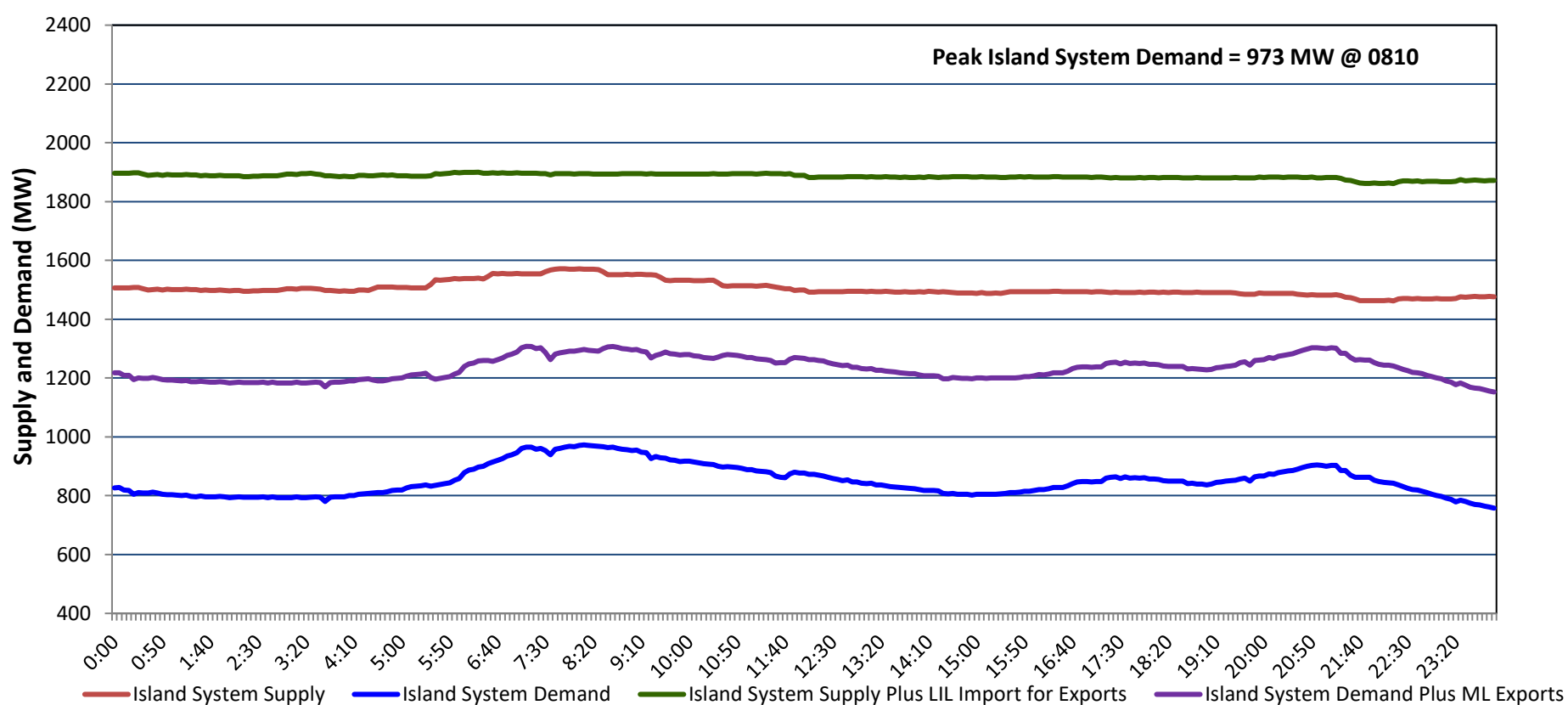


Newfoundland Labrador Hydro (NLH) Supply and Demand Status Report Filed Friday, May 10, 2024

Section 1 Island Interconnected System - Supply, Demand & Exports Actual 24 Hour System Performance For Thursday, May 09, 2024



Island Supply Notes For May 09, 2024

- A As of 0800 hours, May 21, 2023, Holyrood Unit 2 unavailable due to forced extension to planned outage (170 MW).
- B As of 2059 hours, July 13, 2023, Stephenville Gas Turbine unavailable due to forced outage (50 MW).
- C As of 1400 hours, February 06, 2024, St. Anthony Diesel Plant available at 8.7 MW due to forced derating (9.7 MW).
- D As of 1011 hours, April 12, 2024, Holyrood Unit 1 unavailable due to planned outage (170 MW).
- E As of 1505 hours, April 28, 2024, Bay d'Espoir Unit 5 unavailable due to planned outage (76.5 MW).
- F As of 1505 hours, April 28, 2024, Bay d'Espoir Unit 6 unavailable due to planned outage (76.5 MW).
- G As of 2306 hours, May 06, 2024, Labrador Island Link available at 450 MW due to forced derating (700 MW) - Bipole.

Section 2 Island Interconnected System - Supply, Demand & Outlook

Fri, May 10, 2024	Island System Outlook ²	Seven-Day Forecast	Island System Daily Peak Demand (MW)	
			Forecast ⁸	Adjusted ⁶
Island System Supply: ⁴	1,544 MW	Friday, May 10, 2024	1,010	960
NLH Island Generation: ^{3,7}	1,150 MW	Saturday, May 11, 2024	990	940
NLH Island Power Purchases: ⁵	130 MW	Sunday, May 12, 2024	1,045	995
NP and CBPP Owned Generation:	210 MW	Monday, May 13, 2024	995	945
LIL Net Imports to Island: ⁹	54 MW	Tuesday, May 14, 2024	950	900
		Wednesday, May 15, 2024	945	895
7-Day Island Peak Demand Forecast:	1,045 MW	Thursday, May 16, 2024	910	860

Island Supply Notes For May 10, 2024

- Notes:
1. Generation outages for running and corrective maintenance are included. These are not unusual for power system operations. They generally do not impact customer supply. Hydro schedules outages to system equipment whenever possible to coincide with periods when customer demands are low and sufficient supply reserves are available. However, from time to time equipment outages are necessary and reserves may be impacted.
 2. As of 0800 Hours.
 3. Gross continuous unit output.
 4. Gross output from all Island sources (including Note 4).
 5. NLH Island Power Purchases include: ML Imports, Exploits Generation, Rattle Brook, Star Lake, Wind Generation and capacity assistance (when applicable).
 6. Adjusted for interruptible load and the impact of voltage reduction when applicable.
 7. Due to limitations inherent in the design of combustion turbines, the output of combustion turbines may be reduced in the event that ambient temperatures exceed the threshold required for full rated output. This threshold is dependent on the design of each turbine.
 8. Does not include ML Exports.
 9. LIL Import sunk in the Island System. Actual LIL flows will be restricted by various system conditions including, but not limited to, Island Load, ML Exports and Avalon Unit status.

Section 3 Island Peak Demand and Exports Information Previous Day Actual Peak and Current Day Forecast Peak

Thu, May 09, 2024	Island Peak Demand ¹⁰	8:10	973 MW
	Exports at Peak		324 MW
	LIL Net Imports to Island		1,046 MWh
Fri, May 10, 2024	Forecast Island Peak Demand		1,010 MW

- Notes: 10. Island Demand is supplied by NLH generation and purchases, LIL Imports plus generation owned and operated by Newfoundland Power and Corner Brook Pulp & Paper (Deer Lake Power, DLP).